



WEBSTER HARDNESS TESTER W-20 Series

STANDARD

ASTM B647-84 (2000)

Webster Hardness Testers also known as Webster hardness pliers can be used to test the hardness value of aluminum alloys quickly at production facility. They are the preferred instruments for testing the force of aluminum alloy.

W-20 Webster hardness tester can be used to test the hardness value of aluminum alloy, pipe, plate, aluminum parts and other soft metals.

Identify if the aluminum product have the aging or not and also determines the limitation is up to standard. It can also distinguish difference between different types of aluminum and different aging state. Webster hardness testers especially suitable for batch production site and sales site, also for the aluminum profile, door, window, curtain, wall and so on to do the quick testing and non-destructive checking one by one.

Webster hardness tester is easy to operate, just clamp the work piece and read the hardness value directly. It focus on high efficiency and good reliability which conform to the ASTM B647-84 (2000).

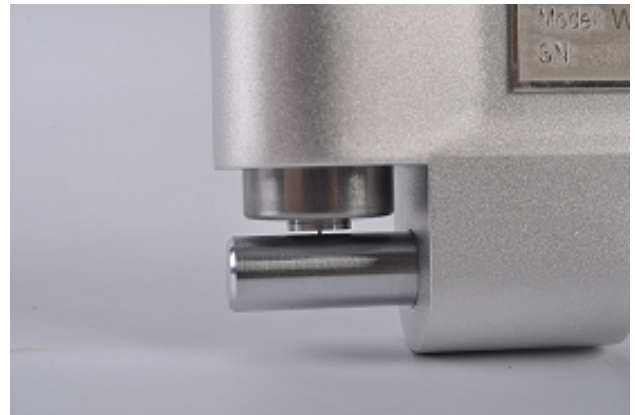
W-20 series aluminum alloy Webster hardness testers have three models: W-20 is mainly used for the inspection of aluminum alloy, tubes and plate, W-20a type can be used to inspect industrial aluminum extrusions, plates or parts of the thickness limit within 13 mm. W-20b type use to test small aluminum profiles or aluminum profiles pipes which has inner diameter greater than 6 mm.





FEATURES

- **Indenter:** Adopt special steel material, high hardness and good toughness. Long life, good interchangeability. Provide comprehensive protection for indenter.
- **Indicator Hand:** High strength of pointer, not easy to deform after long time of use or wrong operation.
- **Dial Glass:** High strength and high toughness of dial glass. Not easy to break after shock.
- **Handle:** Forged aluminum alloy material. Anodic oxidation handle.
- **Stability:** Stability of full scale value. Calibration point stability. Pointer no "crawl".
- **High-quality:** Precision of whole machine assembly. Strict quality inspection ensure equipment of high quality





TECHNICAL SPECIFICATION

Name	Webster Hardness Tester
Range	0-20 HW(the equivalent of 20 -110 HRE)
Indicator Error	0.5 HW (5 -17 HW)
Repeatability Error	0.5 HW(5-17HW)
Weight	0.5 kg
Maximum specimen thickness	According to opening size and model

STANDARD PACKAGE

