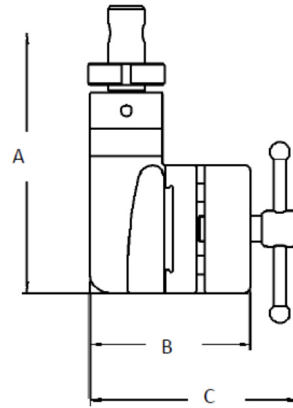
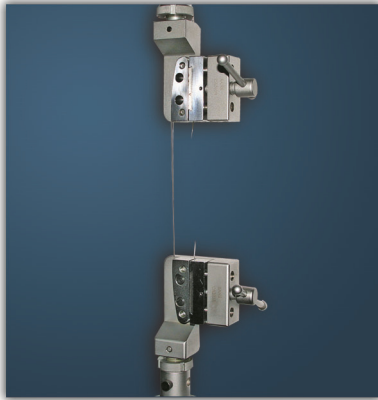
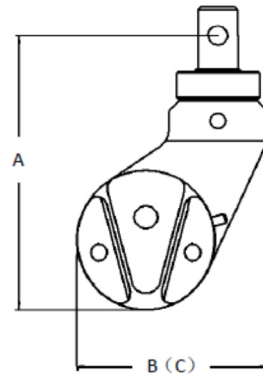


WIRE TENSILE GRIP – RCA203B



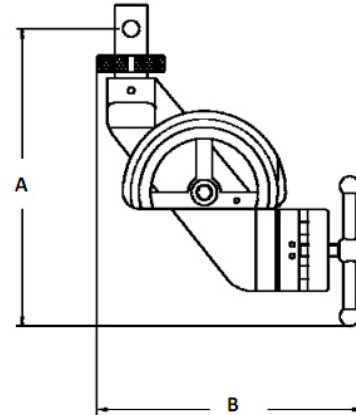
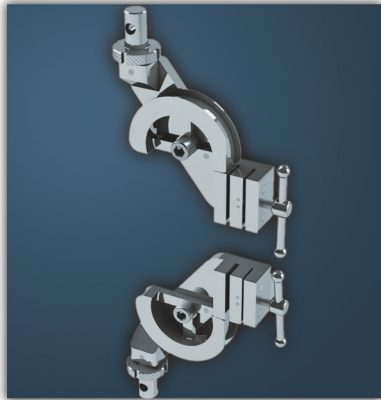
Application	Tensile test of metal wire	Maximum force	2KN
Connection		Height (A)	
Upper grip	Φ10mm pin	Upper grip	143mm
Lower Grip	Φ10mm pin	Lower grip	143mm
Grip body width (B)	88mm	Total width (C)	120mm
Clamping type	Wrapping	Test space needed	286mm
Upper grip weight	1.86kg	Lower grip weight	1.86kg
Jaw face	Serrated, Specimen thickness: 0~4.5mm	Jaw Height	45mm
Jaw Width	20mm	Wire diameter	0~1.5mm

WIRE TENSILE GRIP – RCA503A



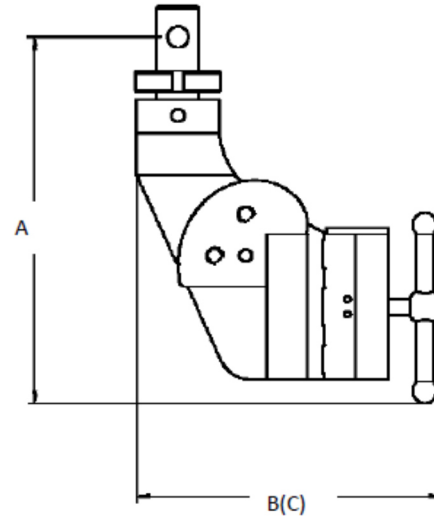
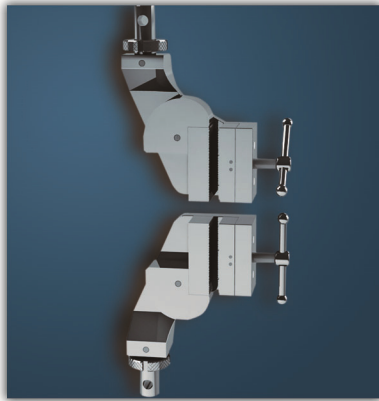
Application	Tensile test of metal wire	Maximum force	5KN
Connection		Height (A)	
Upper grip	Φ10mm pin	Upper grip	138mm
Lower Grip	Φ10mm pin	Lower grip	138mm
Grip body width (B)	96.5mm	Total width (C)	96.5mm
Clamping type	Wrapping	Test space needed	193mm
Upper grip weight	1.78kg	Lower grip weight	1.78kg
Wire diameter	0~1.5mm		

WRAPPING TENSILE GRIP RCB104A



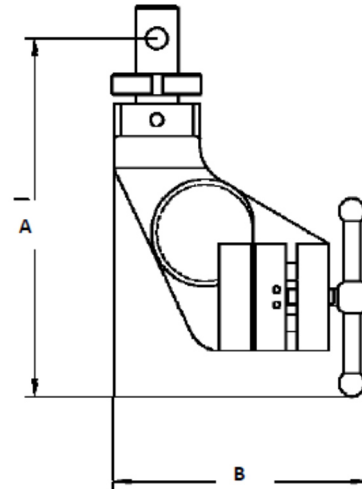
Application	Tensile test of yarn, thread, or rope	Maximum force	10KN
Connection		Height (A)	
Upper grip	Φ10mm pin	Upper grip	185mm
Lower Grip	Φ10mm pin	Lower grip	185mm
Grip body width (B)	165mm	Total width (C)	96.5mm
Clamping type	Wrapping	Test space needed	380mm
Upper grip weight	2kg	Lower grip weight	2kg
Jaw face	Rubber coated	Jaw height	50mm
Jaw width	12mm	Specimen thickness/diameter	0~6mm

WRAPPING TENSILE GRIP RCD503B



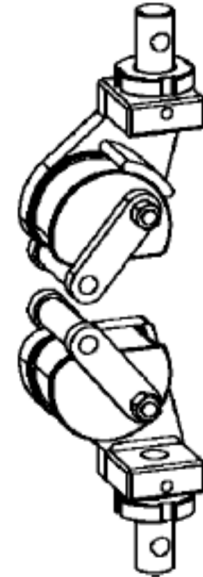
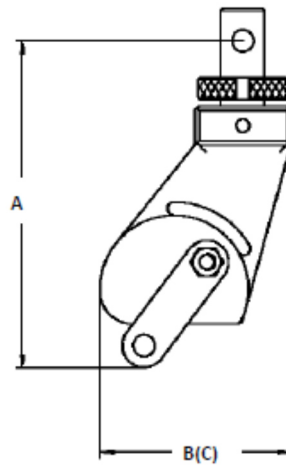
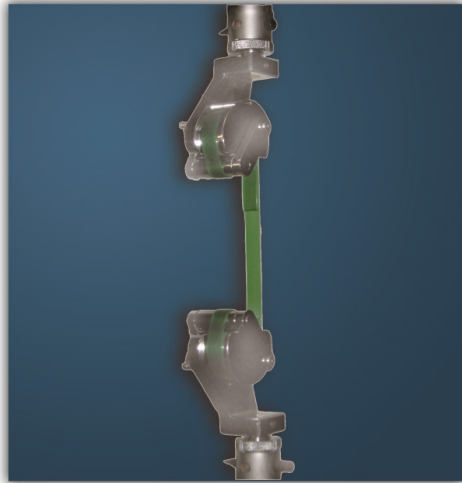
Application	Tensile test of monofilament of geogrid	Maximum force	10KN
Connection		Height (A)	
Upper grip	Φ10mm pin	Upper grip	180mm
Lower Grip	Φ10mm pin	Lower grip	180mm
Grip body width (B)	150mm	Total width (C)	150mm
Clamping type	Wrapping	Test space needed	360mm
Upper grip weight	1.8kg	Lower grip weight	1.8kg
Jaw face	Serrated	Jaw height	30mm
Jaw width	20mm	Specimen thickness/diameter	0~7mm

WRAPPING TENSILE GRIP RCH503A



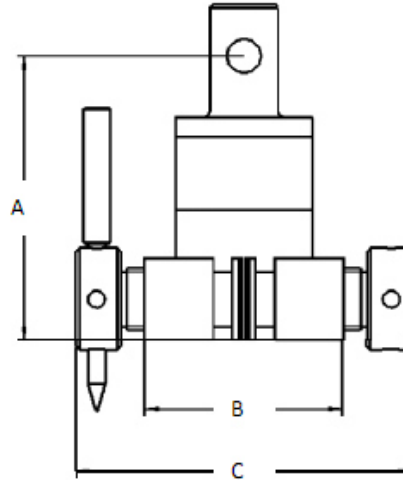
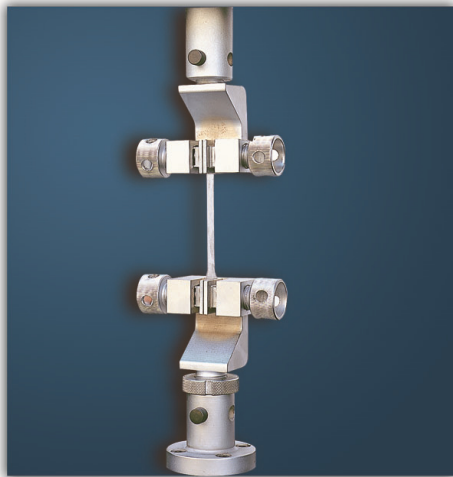
Application	Tensile test of yarn, thread, or rope	Maximum force	5KN
Connection		Height (A)	
Upper grip	Φ10mm pin	Upper grip	168mm
Lower Grip	Φ10mm pin	Lower grip	168mm
Grip body width (B)	125mm	Working Temperature	Ambient
Clamping type	Wrapping	Test space needed	340mm
Upper grip weight	1.5kg	Lower grip weight	1.5kg
Jaw face	Rubber coated	Jaw height	50mm
Jaw width	15mm	Specimen thickness/diameter	0~5mm

SELF TIGHTENING TYPE TENSILE GRIP RCSA204C



Application	Tensile test of packing tape	Maximum force	10KN
Connection		Height (A)	
Upper grip	Φ10mm pin	Upper grip	152mm
Lower Grip	Φ10mm pin	Lower grip	152mm
Grip body width (B/C)	90mm	Working Temperature	Ambient
Clamping type	Wrapping, Self-tightening	Test space needed	310mm
Upper grip weight	1.5kg	Lower grip weight	1.5kg
Jaw width	28mm	Specimen thickness/diameter	0~2mm

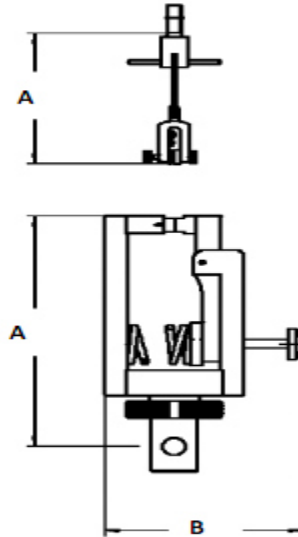
SCREW SIDE ACTION TYPE TENSILE GRIP RDSA103B



Application	Tensile test of metal wire, foil, film, textile, cotton, thread, rubber and fixable materials	Maximum force	1KN
Connection		Height (A)	
Upper grip	Φ10mm pin	Upper grip	85.5mm
Lower Grip	Φ10mm pin	Lower grip	95.5mm
Grip body width (B)	58mm	Total Width	98mm
Clamping type	Screw side action	Test space needed	181mm
Upper grip weight	1.1kg	Lower grip weight	1.1kg
Jaw Face	Flat or serrated	Jaw Height	24mm
Jaw width	26mm	Specimen thickness/diameter	0~13.5mm

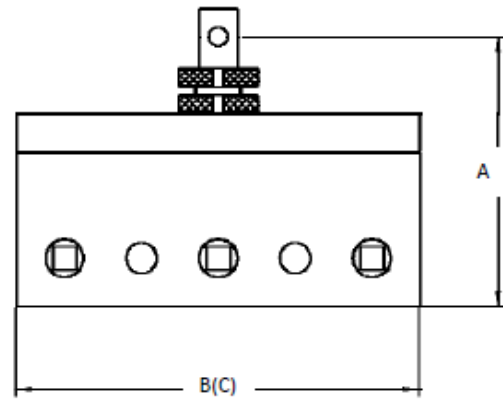
Note: For metallic specimens, hardness should be less than HRC28.

TENSILE GRIP RDSA201A



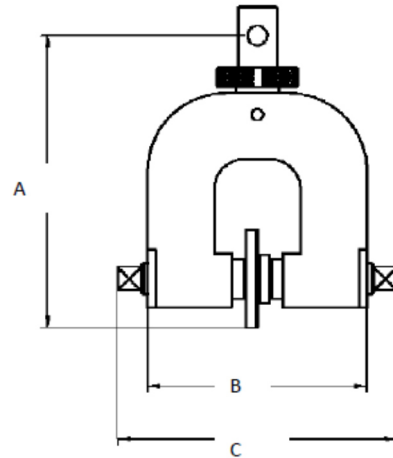
Application	Tensile test of spandex filament	Maximum force	20N
Connection		Height (A)	
Upper grip	M6 screw	Upper grip	80mm
Lower Grip	Φ10mm pin	Lower grip	135mm
Grip body width (B)	90mm	Working temperature	Ambient
Clamping type	Side action	Test space needed	280mm
Upper grip weight	0.05kg	Lower grip weight	1kg
Jaw Face	Flat jaw: 0~5mm		

GEO TEXTILE TENSILE GRIP RDSA204B



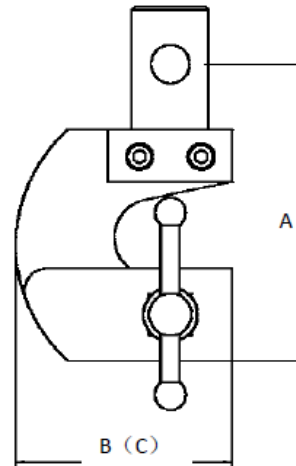
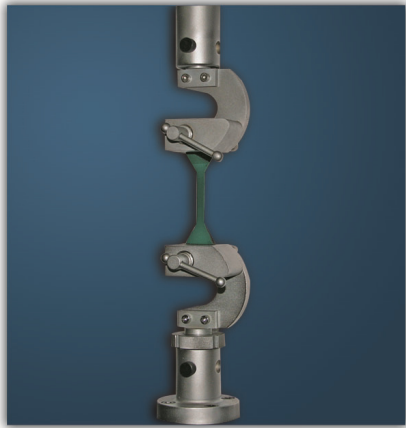
Application	Tensile test of geo-textile	Maximum force	20KN
Connection		Height (A)	
Upper grip	Φ10mm pin	Upper grip	145mm
Lower Grip	Φ10mm pin	Lower grip	145mm
Grip body width (B)	210mm	Total width (C)	210mm
Clamping type	Screw side action	Test space needed	300mm
Upper grip weight	5kg	Lower grip weight	5kg
Jaw Face	Wave shape	Jaw Height	50mm
Jaw width	210mm	Specimen Thickness	0-7mm

TEXTILE TENSILE GRIP RDSA303B



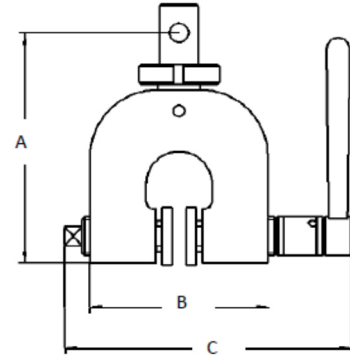
Application	Tensile test of textile (grab test)	Maximum force	3KN
Connection		Height (A)	
Upper grip	Φ10mm pin	Upper grip	150mm
Lower Grip	Φ10mm pin	Lower grip	150mm
Grip body width (B)	120mm	Total width (C)	146mm
Clamping type	Screw side action	Test space needed	300mm
Upper grip weight	1.5kg	Lower grip weight	1.5kg
Jaw Face	Flat with rubber coated	Jaw Height	25mm
Jaw width	25mm / 50mm	Specimen Thickness	0-14mm

TENSILE GRIP (ENVIORMENTAL TEST RDSA502A)



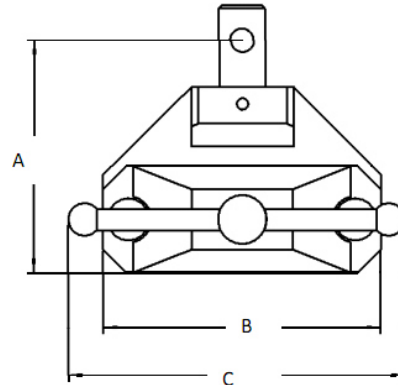
Application	Tensile or peel test of package materials, plastic or plastic film	Maximum force	500N
Connection		Height (A)	
Upper grip	Φ10mm pin	Upper grip	77mm
Lower Grip	Φ10mm pin	Lower grip	87mm
Grip body width (B)	57mm	Total width (C)	57mm
Clamping type	Screw side action	Test space needed	164mm
Upper grip weight	0.47kg	Lower grip weight	0.47kg
Jaw Face	Flat with rubber coated	Jaw Height	4mm
Jaw width	32mm	Specimen Thickness	0-8mm

TENSILE GRIP RDSA503B



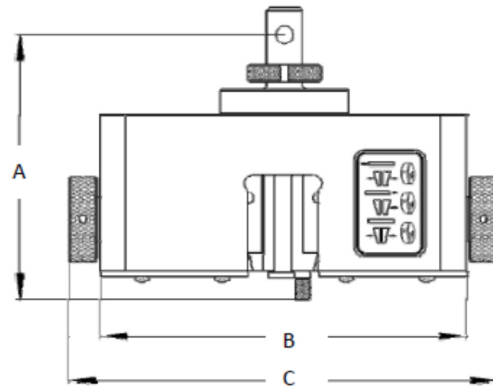
Application	Tensile test of thin metal, textile, plastic and rubber	Maximum force	5KN
Connection		Height (A)	
Upper grip	Φ10mm pin	Upper grip	120mm
Lower Grip	Φ10mm pin	Lower grip	120mm
Grip body width (B)	92mm	Total width (C)	150mm
Clamping type	Screw side action	Test space needed	240mm
Upper grip weight	1.37kg	Lower grip weight	1.37kg
Jaw Face	Wave Shape	Jaw Height	62mm
Jaw width	70mm	Specimen Thickness	0~12mm

WIDE STRIP TENSILE GRIP RDSA503A



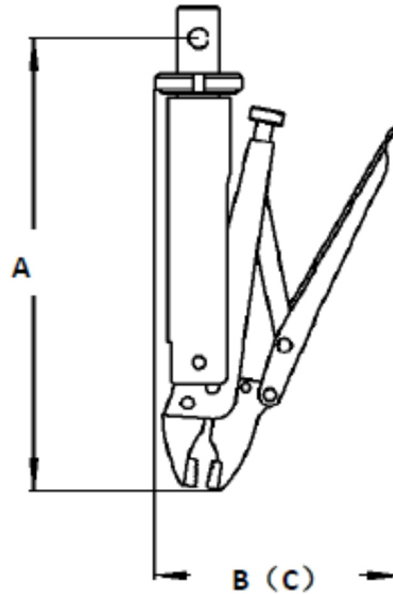
Application	Tensile or peel test of plastic, textile, fabric and rubber and other flexible materials	Maximum force	5KN
Connection		Height (A)	
Upper grip	Φ10mm pin	Upper grip	100mm
Lower Grip	Φ10mm pin	Lower grip	110mm
Grip body width (B)	120mm	Total width (C)	146mm
Clamping type	Screw side action	Test space needed	210mm
Upper grip weight	2.17kg	Lower grip weight	2.23kg
Jaw Face	Wave Shape	Jaw Height	46mm
Jaw width	80mm	Specimen Thickness	0~14mm

TENSILE GRIP RDX104A



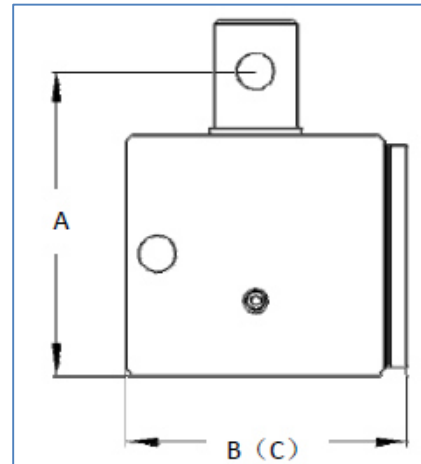
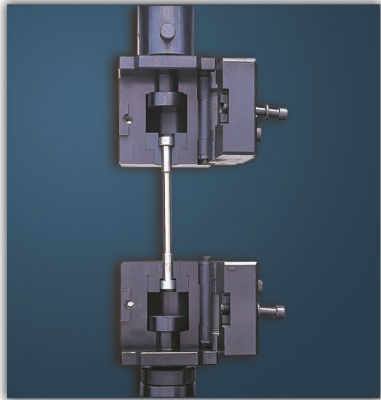
Application	Tensile test of metallic and nonmetallic materials	Maximum force	10KN
Connection		Height (A)	
Upper grip	Φ10mm pin	Upper grip	150mm
Lower Grip	Φ10mm pin	Lower grip	150mm
Grip body width (B)	206mm	Total width (C)	242mm
Clamping type	Screw side action & wedge self-tightening	Test space needed	300mm
Upper grip weight	32.2kg	Lower grip weight	32.2kg
Jaw Face	Wave Shape	Jaw Height	54mm
Jaw width	40mm	Flat jaw face	0~20mm
Vee jaw face	Φ 4~Φ 9, Φ 9~Φ 14		

PINCER TYPE TENSILE GRIP RGSB502A



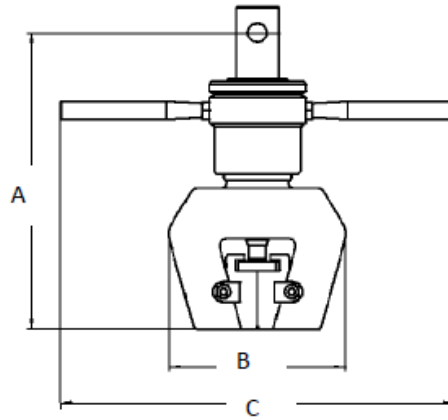
Application	Tensile test for shoes	Maximum force	500N
Connection		Height (A)	
Upper grip	Φ10mm pin	Upper grip	216mm
Lower Grip	Φ10mm pin	Lower grip	216mm
Grip body width (B)	118mm	Total width (C)	118mm
Upper grip weight	1.8kg	Lower grip weight	1.8kg
Test space needed	480mm		

SHOULDER TENSILE GRIP RGSB502A



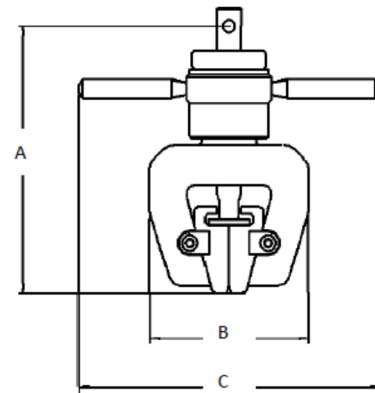
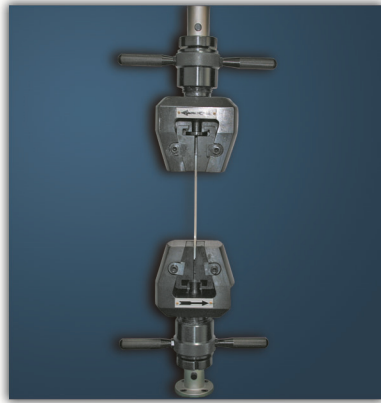
Application	Tensile test of metallic shoulder type specimens	Maximum force	100KN
Connection		Height (A)	
Upper grip	Φ18mm pin	Upper grip	155mm
Lower Grip	Φ18mm pin	Lower grip	175mm
Grip body width (B)	120mm	Total width (C)	120mm
Upper grip weight	15kg	Lower grip weight	15kg
Test space needed	480mm	Test space needed	330mm

TENSILE GRIP RXSA105A



Application	Tensile test for metallic and non-metallic materials	Maximum force	100KN
Connection		Height (A)	
Upper grip	Φ18mm pin	Upper grip	279mm
Lower Grip	Φ18mm pin	Lower grip	279mm
Grip body width (B)	165mm	Total width (C)	370mm
Clamping type	Wedge action	Test space needed	558mm
Upper grip weight	13.6kg	Lower grip weight	13.6kg
Jaw Face	Serrated specimen hardness \leq HRC28	Jaw Height	55mm
Jaw width	40mm	Flat jaw face	0~7mm, 7~14mm, 4~21mm
Vee jaw face	Φ4~Φ9mm, Φ9~Φ14mm, Φ14~Φ19mm		

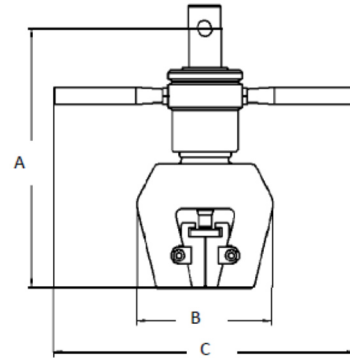
TENSILE GRIP RXSA304A



Application	For metallic and non-metallic plate, rod, and pipe	Maximum force	30KN
Connection		Height (A)	
Upper grip	Φ10mm pin	Upper grip	218mm
Lower Grip	Φ10mm pin	Lower grip	218mm
Grip body width (B)	130mm	Total width (C)	246mm
Clamping type	Wedge action	Test space needed	436mm
Upper grip weight	7.9kg	Lower grip weight	7.9kg
Jaw Height	55mm	Jaw width	40mm
Flat jaw face	0~7mm, 7~14mm, 4~21mm	Vee jaw face	Φ4~Φ9mm, Φ9~Φ14mm, Φ14~Φ19mm

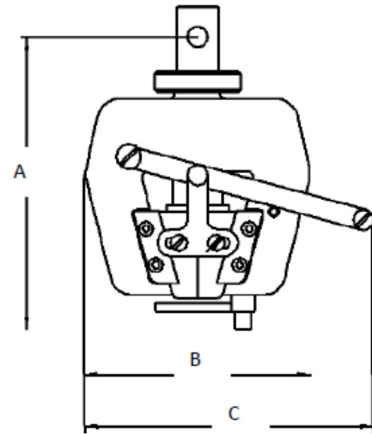
Note: For metal, the hardness \leq HRC24

TENSILE GRIP RXSA305A



Application	Tensile test of metallic and non-metallic materials	Maximum force	300KN
Connection		Height (A)	
Upper grip	Φ28mm pin	Upper grip	320mm
Lower Grip	Φ28mm pin	Lower grip	320mm
Grip body width (B)	240mm	Total width (C)	405mm
Clamping type	Wedge action	Test space needed	640mm
Upper grip weight	32.2kg	Lower grip weight	32.2kg
Jaw Height	62mm	Jaw width	50mm
Flat jaw face	0~8mm, 8~16mm, 16~24mm, 24~32mm	Vee jaw face	Φ4~Φ9mm, 9~Φ16mm, Φ16~Φ23mm, 3~Φ30mm

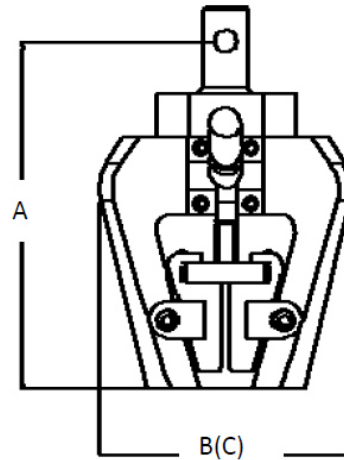
TENSILE GRIP RXSB204B



Application	For metallic and non-metallic plate, rod, and pipe	Maximum force	20KN
Connection		Height (A)	
Upper grip	Φ10mm pin	Upper grip	133mm
Lower Grip	Φ10mm pin	Lower grip	133mm
Grip body width (B)	109mm	Total width (C)	141mm
Clamping type	Wedge action	Test space needed	266mm
Upper grip weight	3.76kg	Lower grip weight	3.76kg
Jaw Height	42mm	Jaw width	40mm
Flat jaw face	0~6mm, 6~12mm	Vee jaw face	Φ4~Φ9mm, Φ9~Φ14mm
Working temperature	-70~350°C		

Note: Specially used in chambers

TENSILE GRIP RXSD204B

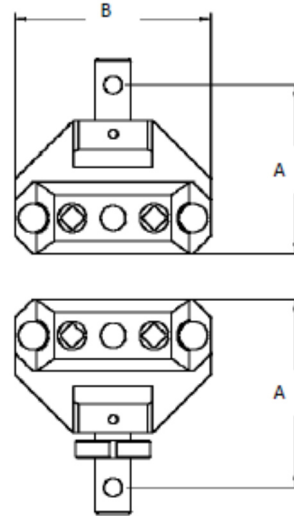


Application	For metallic and non-metallic plate, rod, and pipe	Maximum force	20KN
Connection		Height (A)	
Upper grip	Φ10mm pin	Upper grip	152mm
Lower Grip	Φ10mm pin	Lower grip	162mm
Grip body width (B)	114mm	Total width (C)	114mm
Clamping type	Wedge action	Test space needed	314mm
Upper grip weight	3.4kg	Lower grip weight	3.45kg
Jaw Height	40mm for flat or vee jaw 26.5mm for file jaw	Jaw width	40mm
Flat jaw face	0~6mm, 6~12mm	Vee jaw face	Φ4~Φ9mm, Φ9~Φ14mm
File jaw face	0~6mm		

Note:

- For metal, the hardness \leq HRC24
- For thin sheet metal, zinc-plated metal, or stainless steel, this grip should have some small modifications.

WIDE STRIP TENSILE GRIP RZDA503



Application	Tensile test of non-woven fabrics, textile fibers and gridding cloth	Maximum force	5KN
Connection		Height (A)	
Upper grip	Φ10mm pin	Upper grip	95mm
Lower Grip	Φ10mm pin	Lower grip	105mm
Grip body width (B)	110mm	Total width (C)	110mm
Clamping type	Screw side action	Test space needed	210mm
Upper grip weight	2.5kg	Lower grip weight	2.7kg
Jaw Height	Rubber coated 0~110mm		