



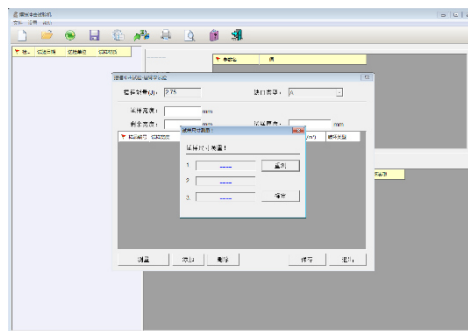
SMART DIMENSION MEASURING DEVICE RT-SM-113

Smart Dimension Measuring Device RT-SM-113 is designed to determine the specimen thickness, as well as the residual depth of the impact specimen, with the features of simply structure, high accuracy, direct reading.

Cooperating with the MIT series impact tester, it may also show the advantage of collecting data automatically and simplifying the specimen measurement.



Connected to PC enables the following functions: collect the specimen width, specimen thickness, as well as the residual thickness of specimens. Put the absorbed impact energy into application software and SW will calculate the impact strength.





TECHNICAL PARAMETER

Item	Specification
Measuring Range	0-25 mm
Measuring accuracy	0.01mm
Resolution	0.001 mm
Force	$\leq 1.5\text{N}$
Environmental Temperature	Room temperature
Dimension (LXWXH)	(80 X 100 X 170) mm
Communication interface	RS-232