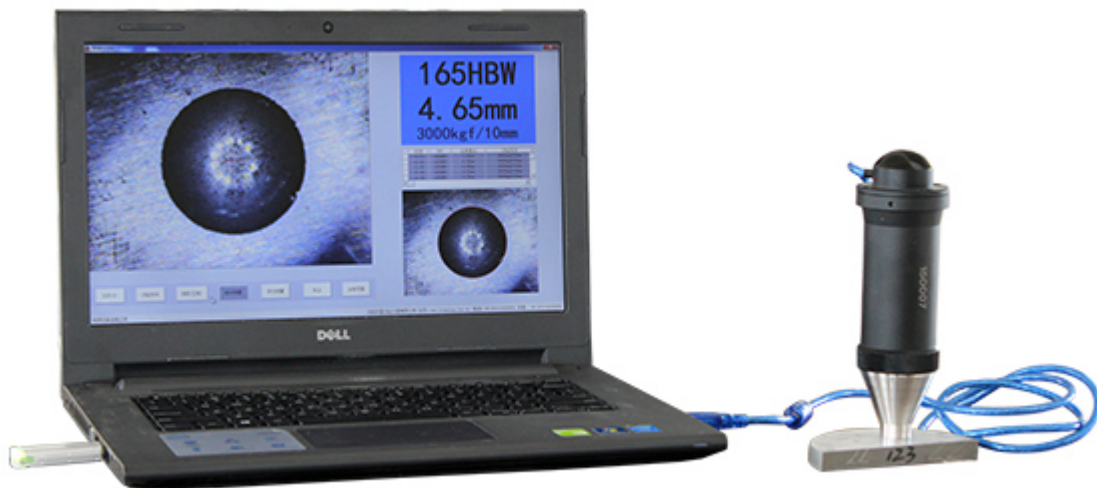




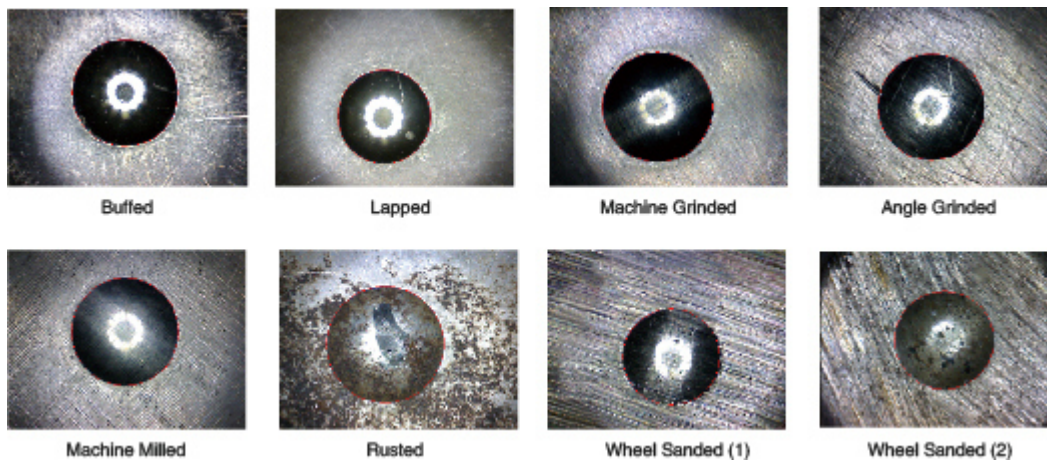
BRINELL INDENTATION MEASUREMENT SYSTEM MS-1a

RoboTest MS-1 series Brinell Indentation Measurement System with advanced visual technology to shoot the indentation by CCD camera lens, recognizing and measuring diameter of the indentation automatically on laptop and then display the Brinell hardness value of the workpiece directly. Measurement process is efficient, simple, objective, and reliable.

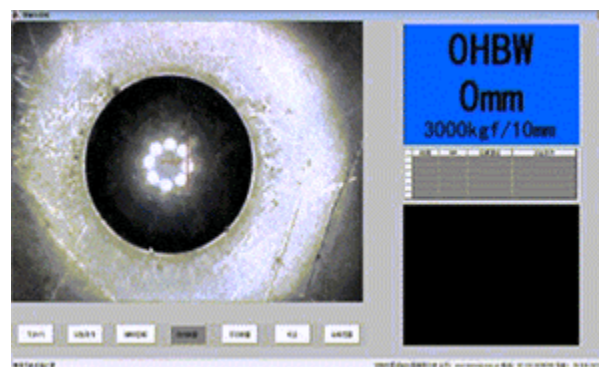


FEATURES

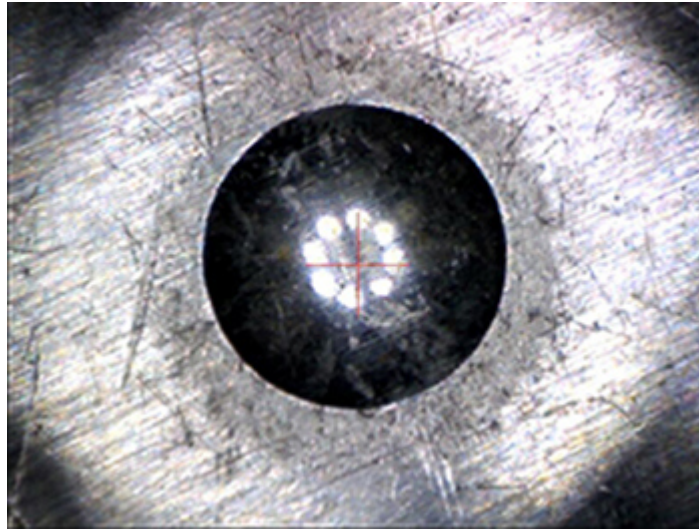
- **Excellent Image Processing Technology:** 100% recognition rate for indentations on various surface finishing



- **Automatic Recognition:** Manual and automatic recognition available.



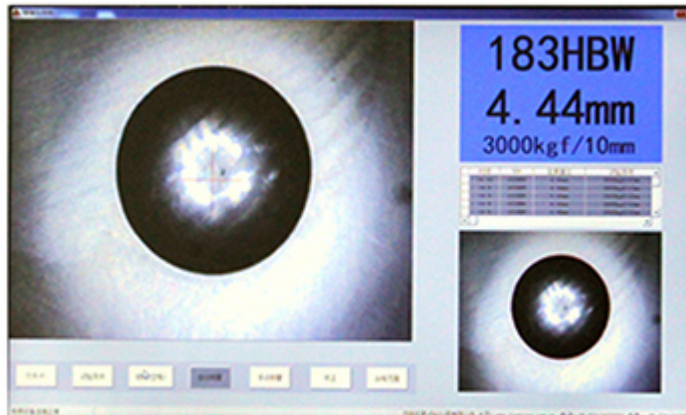
- **Clean and Sharp Image:** Clear and sharp image from specially designed annular light source and high-grade lenses with excellent contrast.



- **Magnetic Inlaid Camera:** Magnets inlaid camera can stick on work piece without support and easy to move.



- **Simple User Interface:** Simple users interface and easy to use.



- **Superior Compatibility:** Works in combination with any Brinell hardness tester.





TECHNICAL SPECIFICATION

| Name | Brinell Indentation Measurement System |
|-----------------------|--|
| Resolution | 1024 X 768 |
| Test Range | 2.4-6mm (8-650 HBW) |
| Test Condition | 10 mm ball,3000/1500/500kgf |
| Accuracy | ±1% HBW |
| Hardware requirement: | CPU: more than 2GHz Internal Storage: more than 2GB Operation System: windows XP/32 bit or windows 7/32 bit. |

SYANDARD PACKAGE



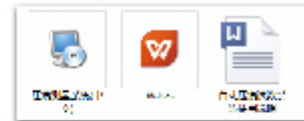
Camera



Dongle



Carrying case



Documents



Calibration Block