



## WEBSTER HARDNESS TESTER W-B92 Series

### STANDARD

---

#### ASTM B647-84 (2000)

W-B92 series Webster hardness tester can quickly test the hardness of stainless steel on site. It is convenient to operate, and as long as clamping the test can be finished. The hardness value can be read directly with high efficiency and reliability.

The Webster Hardness Tester is the first choice instrument for testing the mechanical property of stainless steel plate and strip.

The Webster Hardness Tester is used for quick testing of austenitic stainless steel and mild steel plate and strip, especially for quick and nondestructive qualification test of batches products one by one on production and construction site.

W-B92 Webster Hardness Testers can be applied for testing soft stainless steel and cold-rolled steel with thickness less than 6mm.

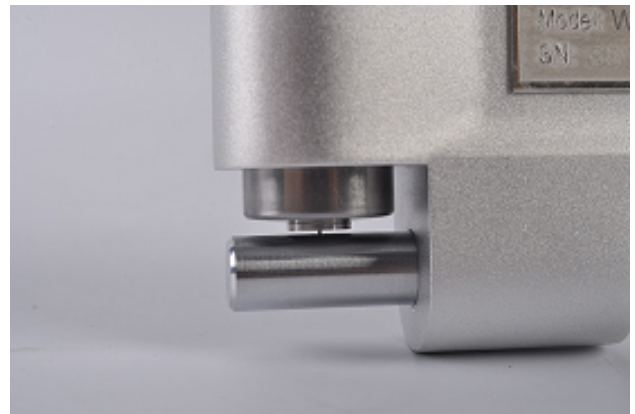




## FEATURES

---

- **Indenter:** Adopt special steel material, high hardness, and good toughness. Long life, good interchangeability. Provide comprehensive protection for indenter.
- **Indicator Hand:** High strength of pointer, not easy to deform after long time of use or wrong operation.
- **Dial Glass:** High strength and high toughness of dial glass. Not easy to break after shock.
- **Handle:** Forged aluminum alloy material. Anodic oxidation handle.
- **Stability:** Stability of full scale value. Calibration point stability. Pointer no "crawl".
- **High-quality:** Precision of whole machine assembly. Strict quality inspection ensure equipment of high quality





## TECHNICAL SPECIFICATION

---

| Name                          | Webster Hardness Tester               |
|-------------------------------|---------------------------------------|
| Range                         | 0-20 HW(the equivalent of 50 -90 HRB) |
| Indicator Error               | 0.5 HW (5 -17 HW)                     |
| Repeatability Error           | 0.5 HW(5-17HW)                        |
| Weight                        | 0.5 kg                                |
| Maximum specimen thickness    | According to opening size and model   |
| Minimum sample inner diameter | According to the anvil size and model |

## STANDARD PACKAGE

---



Tester



Standard Test Block  
(with verification certificate)



Spare Indenter



Calibration Wrench



Screwdriver



Carrying Case